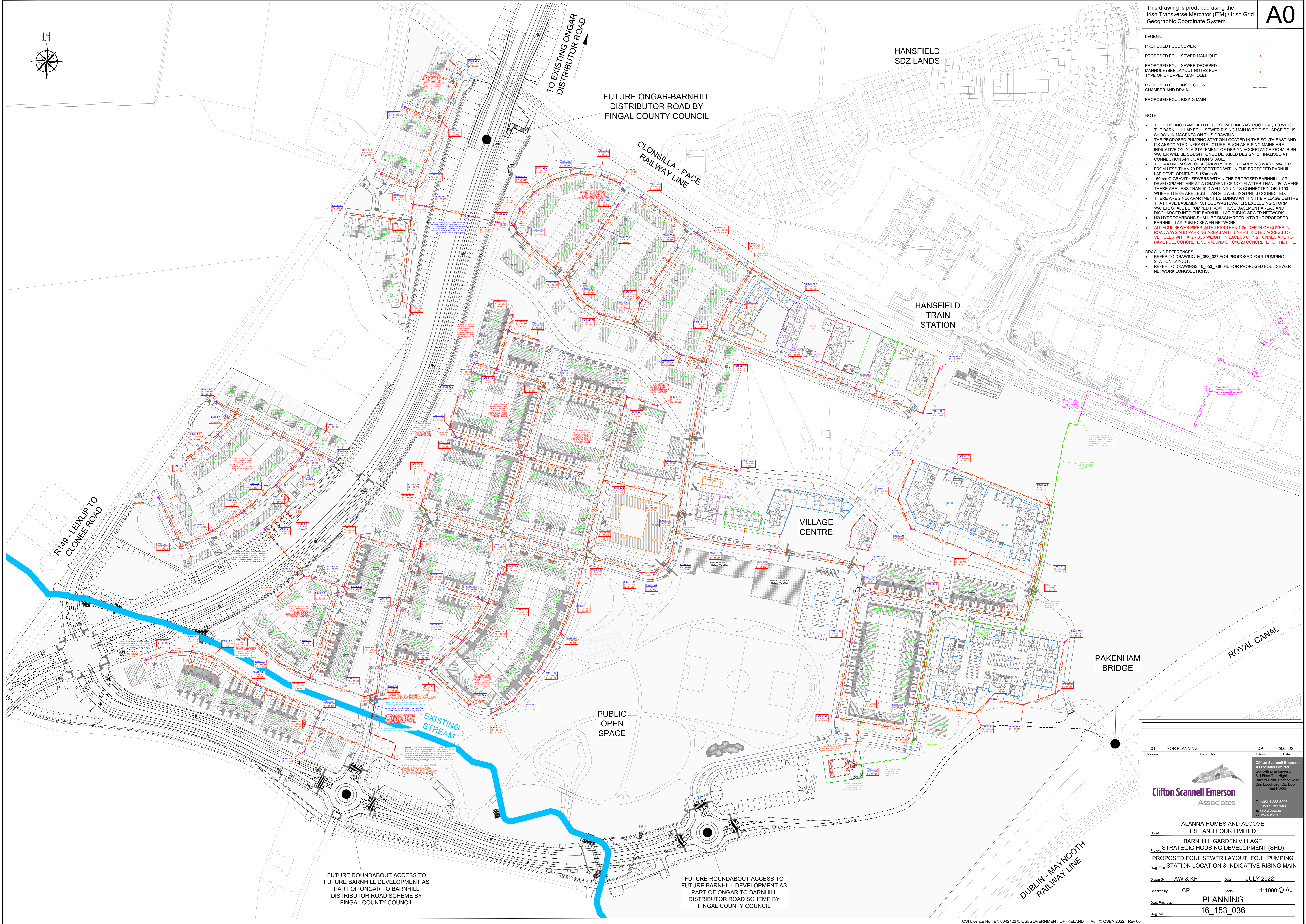


- LEGEND:**
- PROPOSED FOUL SEWER ---
 - PROPOSED FOUL SEWER MANHOLE ●
 - PROPOSED FOUL SEWER DROPPED MANHOLE (SEE LAYOUT NOTES FOR TYPE OF DROPPED MANHOLE) ●
 - PROPOSED FOUL INSPECTION CHAMBER AND DRAIN ---
 - PROPOSED FOUL RISING MAIN ---

- NOTE:**
- THE EXISTING HANSFIELD FOUL SEWER INFRASTRUCTURE, TO WHICH THE BARNHILL LAP FOUL SEWER RISING MAIN IS TO DISCHARGE TO, IS SHOWN IN MAGENTA ON THIS DRAWING.
 - THE PROPOSED PUMPING STATION LOCATED IN THE SOUTH EAST AND ITS ASSOCIATED INFRASTRUCTURE, SUCH AS RISING MAINS ARE INDICATIVE ONLY. A STATEMENT OF DESIGN ACCEPTANCE FROM IRISH WATER WILL BE SOUGHT ONCE DETAILED DESIGN IS FINALISED AT CONNECTION APPLICATION STAGE.
 - THE MAXIMUM SIZE OF A GRAVITY SEWER CARRYING WASTEWATER FROM LESS THAN 20 PROPERTIES WITHIN THE PROPOSED BARNHILL LAP DEVELOPMENT IS 150mm Ø.
 - 150mm Ø GRAVITY SEWERS WITHIN THE PROPOSED BARNHILL LAP DEVELOPMENT ARE AT A GRADIENT OF NOT FLATTER THAN 1:60 WHERE THERE ARE LESS THAN 10 DWELLING UNITS CONNECTED, OR 1:150 WHERE THERE ARE LESS THAN 20 DWELLING UNITS CONNECTED.
 - THERE ARE 2 NO. APARTMENT BUILDINGS WITHIN THE VILLAGE CENTRE THAT HAVE BASEMENTS. FOUL WASTEWATER, EXCLUDING STORM WATER, SHALL BE PUMPED FROM THESE BASEMENT AREAS AND DISCHARGED INTO THE BARNHILL LAP PUBLIC SEWER NETWORK.
 - NO HYDROCARBONS SHALL BE DISCHARGED INTO THE PROPOSED BARNHILL LAP PUBLIC SEWER NETWORK.
 - ALL FOUL SEWER PIPES WITH LESS THAN 1.2m DEPTH OF COVER IN ROADWAYS AND PARKING AREAS WITH UNRESTRICTED ACCESS TO VEHICLES WITH A GROSS WEIGHT IN EXCESS OF 1.2 TONNES ARE TO HAVE FULL CONCRETE SURROUND OF C16/20 CONCRETE TO THE PIPE.
- DRAWING REFERENCES:**
- REFER TO DRAWING 16_053_037 FOR PROPOSED FOUL PUMPING STATION LAYOUT.
 - REFER TO DRAWINGS 16_053_038-045 FOR PROPOSED FOUL SEWER NETWORK LONGSECTIONS.



R149 LEIXLIP TO CLONEE ROAD

TO EXISTING ONGAR DISTRIBUTOR ROAD

FUTURE ONGAR-BARNHILL DISTRIBUTOR ROAD BY FINGAL COUNTY COUNCIL

CLONSILLA - PACE RAILWAY LINE

HANSFIELD SDZ LANDS

HANSFIELD TRAIN STATION

VILLAGE CENTRE

PUBLIC OPEN SPACE

EXISTING STREAM

PAKENHAM BRIDGE

ROYAL CANAL

DUBLIN - MAYNOOTH RAILWAY LINE

FUTURE ROUNDABOUT ACCESS TO FUTURE BARNHILL DEVELOPMENT AS PART OF ONGAR TO BARNHILL DISTRIBUTOR ROAD SCHEME BY FINGAL COUNTY COUNCIL

FUTURE ROUNDABOUT ACCESS TO FUTURE BARNHILL DEVELOPMENT AS PART OF ONGAR TO BARNHILL DISTRIBUTOR ROAD SCHEME BY FINGAL COUNTY COUNCIL

01	FOR PLANNING	CP	28.06.22
Revision	Description	Initials	Date

Clifton Scannell Emerson Associates

Clifton Scannell Emerson Associates Limited
 Consulting Engineers
 3rd Floor The Heights,
 Bakers Point, Pottery Road,
 Dun Laoghaire, Co. Dublin,
 Ireland, A90 KW29

T: +353 1 288 5208
 F: +353 1 283 3466
 E: info@csesa.ie
 W: www.csesa.ie

Client: ALANNA HOMES AND ALCOVE IRELAND FOUR LIMITED

Project: BARNHILL GARDEN VILLAGE STRATEGIC HOUSING DEVELOPMENT (SHD)

Proposed: PROPOSED FOUL SEWER LAYOUT, FOUL PUMPING STATION LOCATION & INDICATIVE RISING MAIN

Drawn By: AW & KF Date: JULY 2022

Checked by: CP Scale: 1:1000 @ A0

Drawn Progress: PLANNING

Draw No: 16_153_036